

Scaling-up value-based transformation

Bert Vrijhoef, PhD, MSc

Session 3:

Looking forwards: transforming health and care delivery

Brussels, 4th December 2024



CONGRATULATIONS!



**2024 Thought Leader
EHTEL Symposium**

**Imagining 2029:
“Back to the Future”**

3-4 December 2024
Brussels, Belgium

REGISTER NOW

TRANSFORMING CARE DELIVERY

CHANGE MANAGEMENT & CAPACITY BUILDING

EHTS IMPLEMENTATION STRATEGIES

CELEBRATING 25th ANNIVERSARY EHTEL

SORSIX

Share
EHR Exchange Format

COMFORTage

BeWell.
Support Access for a Primary Health Workforce
Developed in Ontario and across 30+

laurel

Scaling-up value-based transformation

Bert Vrijhoef, PhD, MSc

Session 3:

Looking forwards: transforming health and care delivery

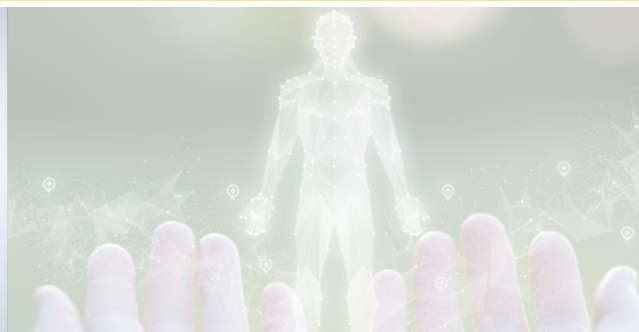
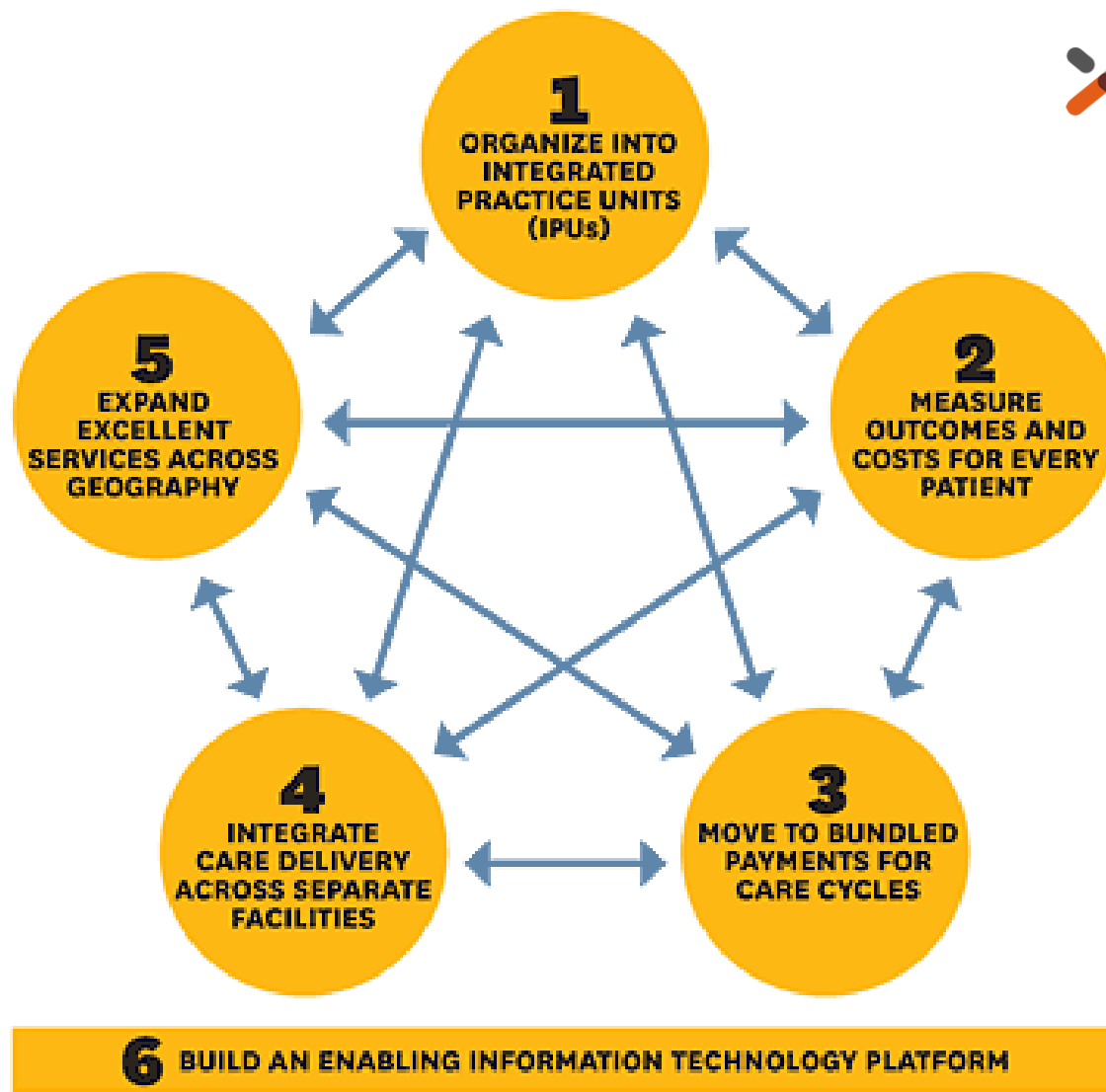
Brussels, 4th December 2024



Value-Based Healthcare (VBHC)

- Change from a volume-driven into a value-driven healthcare
- VBHC focuses on delivering value for patients
- Value is defined as health outcomes achieved per dollar spend
- Value can increase by improving outcomes or lowering healthcare costs, or both
- VBHC is a strategy for how healthcare should be delivered and measured consisting of 6 mutually reinforcing components





VBHC Transformation

RESEARCH

Open Access

The implementation of value-based healthcare: a scoping review



Dorine J. van Staalduinen^{1,2*}, Petra van den Bekerom², Sandra Groeneveld², Martha Kidanemariam¹, Anne M. Stiggelbout¹ and M. Elske van den Akker-van Marle¹

1. How is VBHC conceptualized in the current VBHC literature?
2. What components of VBHC are implemented or proposed to be implemented, and what effects of implementing these components are reported?
3. What strategies are used or proposed to implement VBHC and what effects of these strategies are described?



VBHC Transformation

- From a review of 62 articles it was found that:
 - *a majority of articles did not specify a conceptualization of VBHC*
 - *most hospitals implemented only 2 components of VBHC*
 - *few studies examined effects*
 - *implementation strategies were described rarely, and were evaluated even less*
- VBHC has a high level of interpretative variability
- Hospitals have not implemented VBHC as an integrative strategy



Scaling-up Value Based Transformation

THE
MILBANK QUARTERLY
A MULTIDISCIPLINARY JOURNAL OF POPULATION HEALTH AND HEALTH POLICY

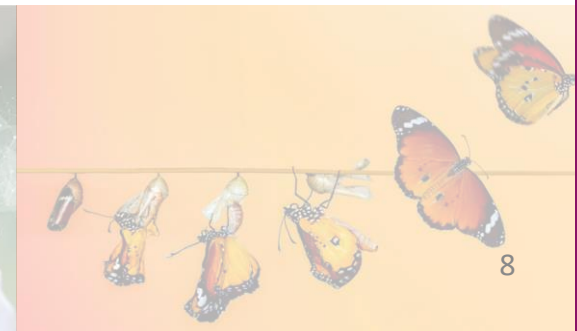


Original Scholarship

Four System Enablers of Large-System Transformation in Health Care: A Mixed Methods Realist Evaluation

EMILIE FRANCIS-AUTON,^{*,#} JANET C. LONG,^{*,#}
MITCHELL SARKIES,^{*} NATALIE ROBERTS,^{*}
JOHANNA WESTBROOK,^{*} JEAN-FREDERIC LEVESQUE,[†]
DIANE E. WATSON,[‡] REBECCA HARDWICK,[§]
PETER HIBBERT,^{*} CHIARA POMARE,^{*}
and JEFFREY BRAITHWAITE^{*}

^{}Australian Institute of Health Innovation, Macquarie University; [†]Centre for Primary Health Care and Equity, University of New South Wales; [‡]Bureau of Health Information, St. Leonards; [§]Peninsula Medical School, University of Plymouth*



Scaling-up Value Based Transformation

- Leading Better Value Care is a flagship, VBHC programme in NSW, Australia (8 million people; 130.000 staff; 221 facilities)
- “...considers what value means for patients, clinicians and the health system and aims to provide health services that deliver value across 4 domains: improved health outcomes; improved experiences of care; improved experiences of providing care; and better effectiveness and efficiency of care.”

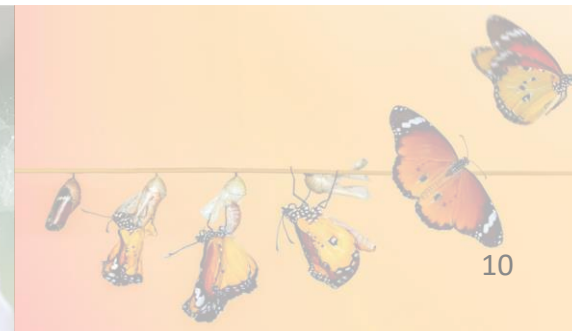
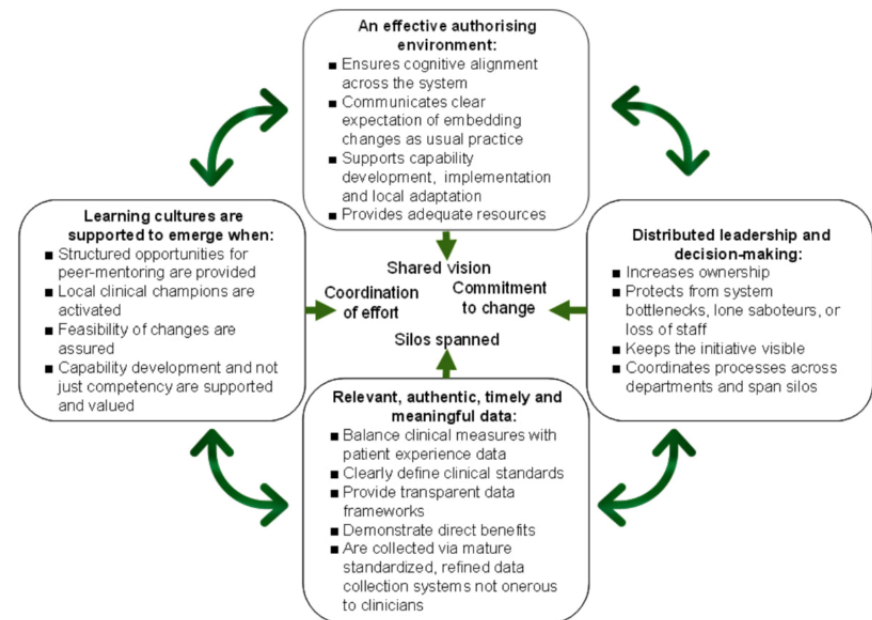


Scaling-up Value Based Transformation

Four System Enablers:

- building an authorizing environment;
- providing relevant, meaningful, transparent and timely data;
- designating and distributing leadership and decision making;
- fostering the emergence of a learning culture.

Figure 3. The Four System Enablers



Take home Messages

- Without a conceptualization of VBHC, a description and evaluation of its implementation strategies, it remains unknown whether, how and for whom it works.
- Providing relevant, meaningful, transparent and timely data enables large system transformation in healthcare.
- **Laurel Project** aims to help care systems build better services for long-term integrated care (conceptualization & implementation)
- Only when history is written before it actually unfolds, one can shape the future.



References

Slide 5: Porter ME, Teisberg EO. Redefining Health Care: creating value-based competition on results. Harvard Business School Press, 2006.

Slide 6: Porter ME, Lee TH. The strategy that will fix health care. Harvard Business Review 2013.

Slides 7-8: van Staalduinen DJ, van den Bekerom P, Groeneveld S, et al. The implementation of value-based healthcare: a scoping review. BMC HSR 2022;22:270.

Slides 9-11: Francis-Auton E, Long JC, Sarkies M, et al. Four system enablers of large-system transformation in health care: a mixed methods realist evaluation. Millbank Q 2024;102:183-211.

Slides 12-13: www.laurel.eu (accessed on 1 Dec 2024).

Slide 14: <https://www.forbes.com/sites/chunkamui/2015/12/14/future-histories/> (accessed on 1 Dec 2024).

Adding Evidence to Health Care Innovation

bert.vrijhoef@panaxea.eu | [@panaxea.bsky.social](https://bsky.app/profile/panaxea.com) | www.panaxea.eu

