

# COMFORTage

Prediction, monitoring and personalized recommendations  
for prevention and relief of dementia and frailty



Funded by  
the European Union



Aris Tsitiridis, PhD  
UBITECH, Greece



*Prediction, monitoring and personalized recommendations for prevention and relief  
of dementia and frailty*



[www.comfortage.eu](http://www.comfortage.eu)

# PARTNERS-CONSORTIUM

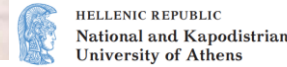
## RESEARCH CENTERS (8)



## LARGE INDUSTRY (2)



## HEALTHCARE ACTORS & POLICY MAKERS (11)

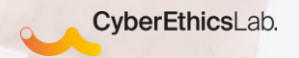


## SME INDUSTRY (10)

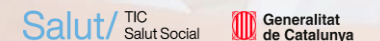
(eHealth, AI/AAL & Blockchain)



## SSH & LEGAL (4)



## NETWORKS & ASSOCIATIONS (4)



# What is COMFORTage?

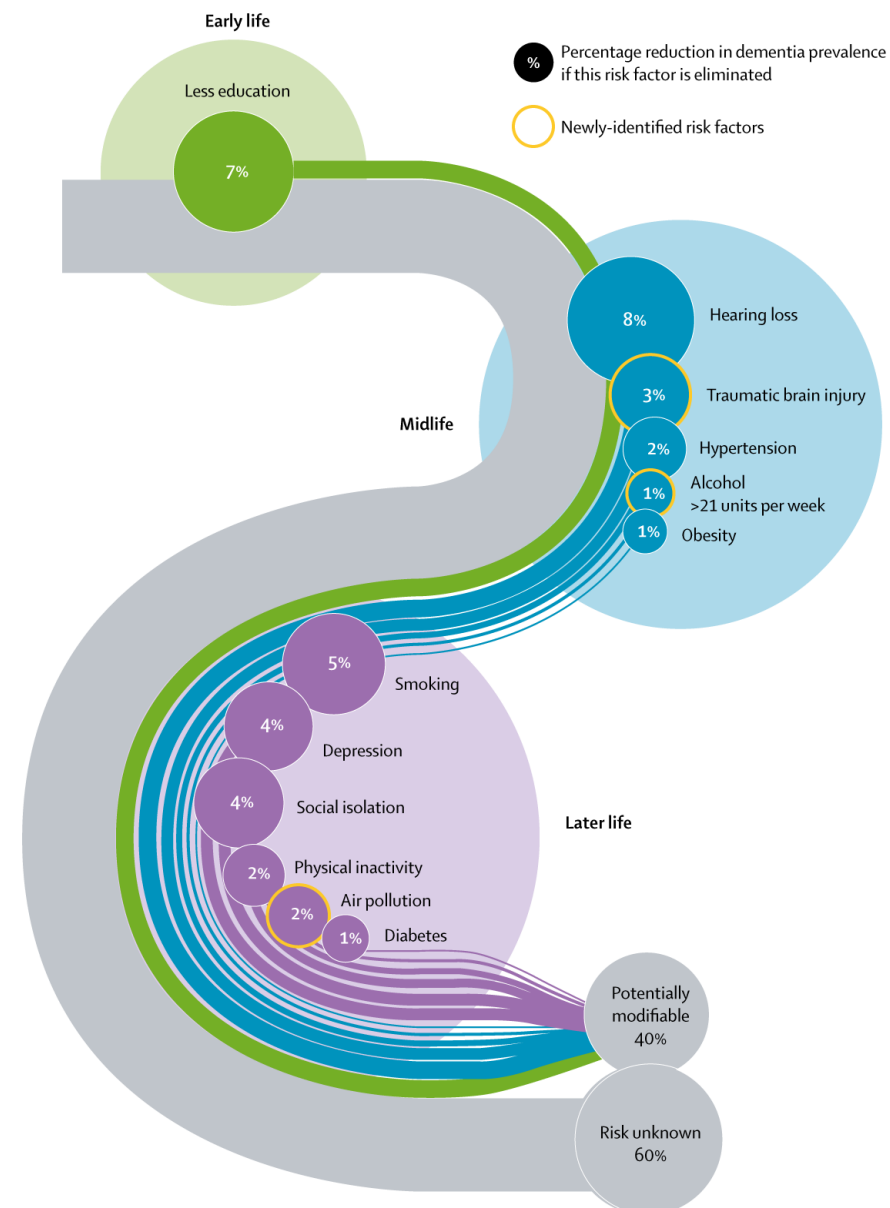
Multidisciplinary approach and joint-effort of 39 organizations from 12 countries

**Deliver personalised care for age-related diseases, promoting healthy aging and reducing healthcare disparities across Europe.**

- **Investigate, develop and evaluate** complex challenges of aging such as AD, dementia and frailty, combining clinical expertise, technological innovation and community engagement.
- **Establish a pan-European framework** for community-based prevention and intervention strategies.

## Risk factors for dementia

Up to 12 potentially modifiable risk factors account for 40% of dementias worldwide





COMFORTage  
Use cases

### Cluster A



Casual Risk Factors Towards  
Early Diagnosis and  
Community Based  
Primary Prevention of  
Dementia

### Cluster B



Association between the  
development  
of dementia and other  
health-related conditions.

### Cluster C



Study of Improved and  
Personalised Interventions  
that can delay and relieve  
Dementia.

### Cluster D



Study of Neuromechanics  
and Falls prevention.

### Cluster E



Active Ageing Observatory:  
Study of Digital Innovation  
Hubs and Living Labs for  
improving wellbeing and  
QoL.



**COMFORTage**  
**Objectives**

**PRIMARY AND COMMUNITY-BASED  
HEALTH AND CARE SERVICES**



**PROMOTING A HOLISTIC  
DIGITAL CARE PATHWAY**



**PREVENTIVE AND  
INTEGRATED  
CARE MODELS**



**EVIDENCE-BASED  
HEALTH POLICIES**



**EMPOWERMENT  
& IMPROVEMENT  
OF HEALTH AND  
DIGITAL LITERACY**

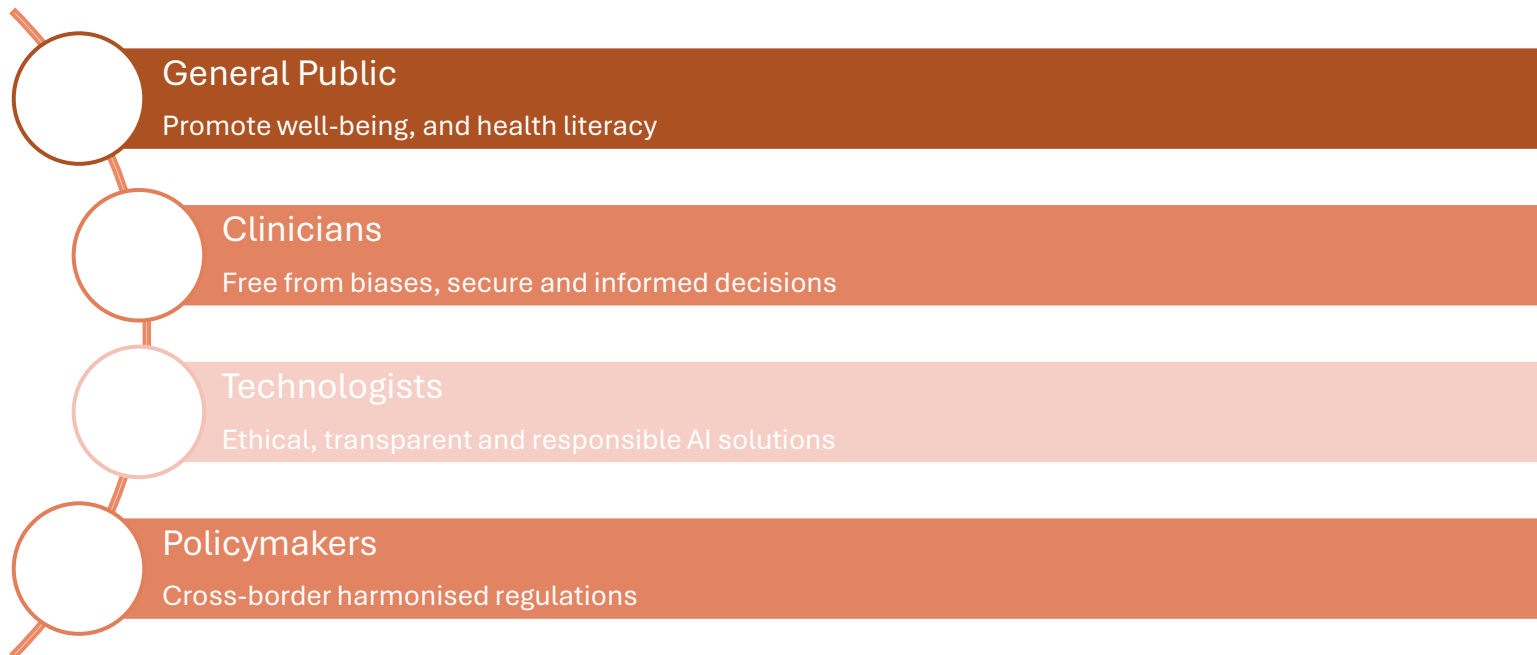


**DEMONSTRATING  
COST-EFFECTIVENESS**



# COMOFTage Vision

“Make healthy ageing achievable for all Europeans by bringing cutting-edge AI to personalised care.”



## Project's Main Challenges

*Diverse data sources*

01

02

*Person-centred & community-based healthcare*

*Health & Social Innovation*

04

03

*Educational & Virtualised AI-Based Healthcare Platform*







# Multidisciplinary approach





# AI innovations

*Multimodal analysis  
& forecasting*

01

02

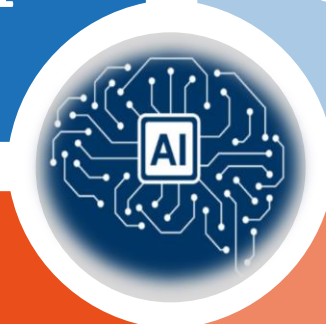
*Digital twins Virtual Assistant*

*Living Labs*

04

03

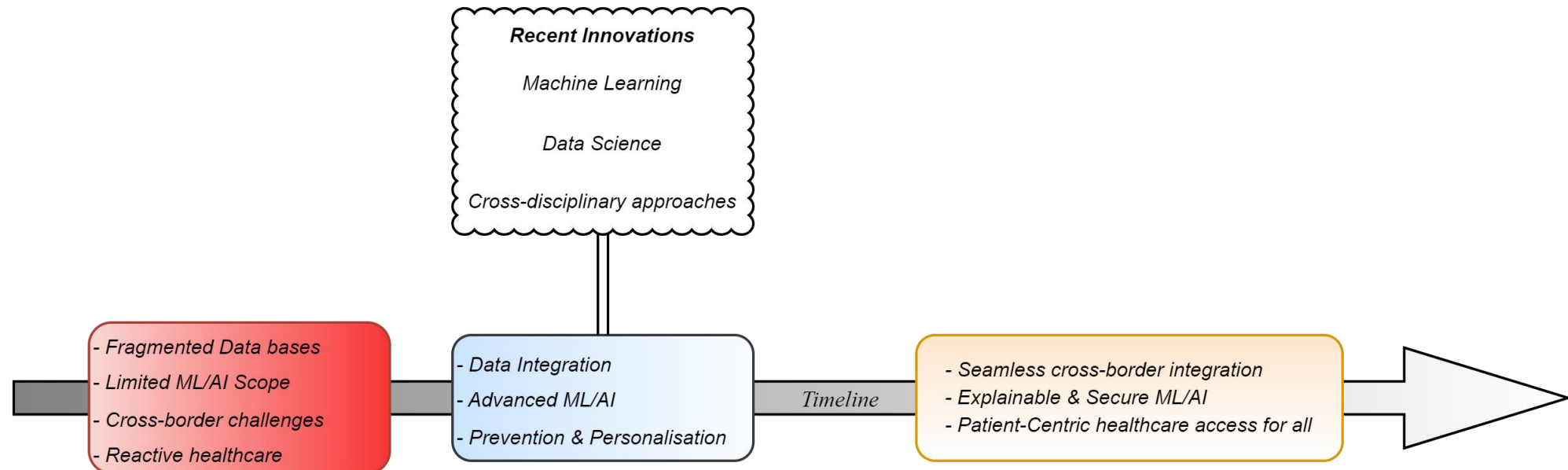
*An educational  
AI-Based Healthcare Platform*





## Multimodal Systems

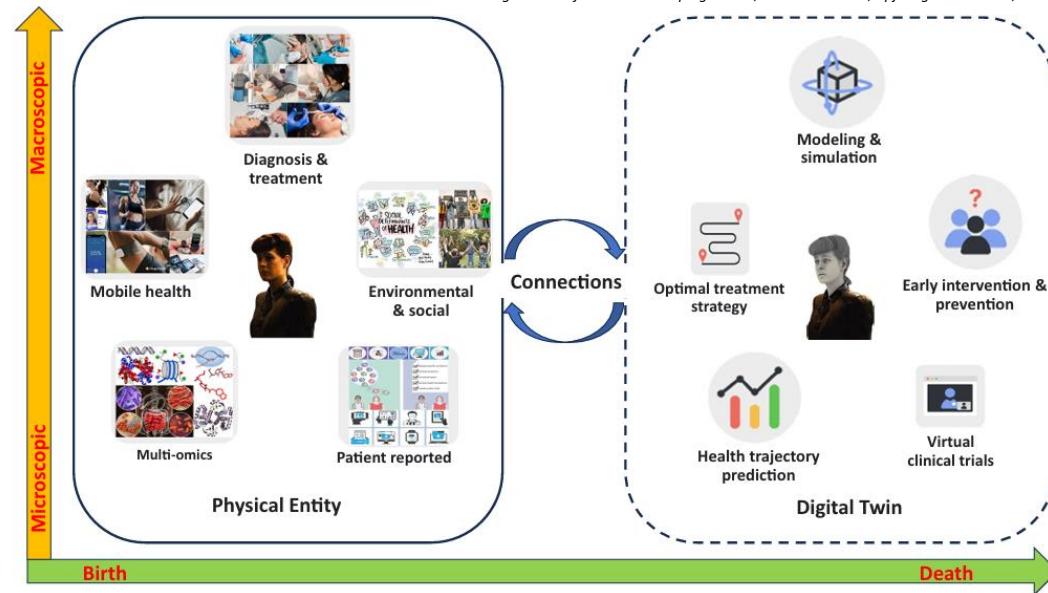
**Process** diverse data types, revealing hidden relationships across data domains for more precise and comprehensive insights





*A virtual replica of a patient, enabling real-time simulation and personalised care by integrating data from multiple sources.*

*Digital twins for health: a scoping review, Katsoulakis et al, npj - digital medicine, 2024*



### **Key Features**

1. Virtual Health Replica
2. Advanced Simulations
3. Personalised Care

### **Expected impact**

1. Proactive Healthcare
2. Empowered Stakeholders
3. Cross-Border Integration



# COMFORTage

## Robust Foundations



# COMFORTage



COMFORTage

THANKS

For your attention



Ask us everything  
[info@comfortage.eu](mailto:info@comfortage.eu)



[www.comfortage.eu](http://www.comfortage.eu)

Follow us in social media

[/COMFORTage\\_eu](https://www.instagram.com/COMFORTage_eu) [/COMFORTage\\_eu](https://twitter.com/COMFORTage_eu) [/COMFORTage](https://www.facebook.com/COMFORTage) [/COMFORTage](https://www.linkedin.com/company/COMFORTage)



Funded by  
the European Union



feedback loop  
continuous learning

### Leading primary data sources

Extensive Research Analysis and implementation of AI & Learning Models



### Personalized Prediction & Prevention

#### Improved AI Models for Personalization

Patients' stratification based on personalized prognosis of the disease progression

### Healthcare Decision Support

ICML, DSS



### Continuous Improved Care

#### People-Centric Assistive Applications

Calibration of AI Models and implementation of advanced AI techniques to address the impact of targeted decision support

Monitoring and Follow-Up  
Smart homes, robotic and virtual systems, Ambient Intelligence, Serious Games



## Risk Factor Analysis

## Patient Stratification & Risk Identification

## Personalised Treatment and Care Plans

## Continuous Risk Assessment

## Complete health status monitoring

Processing large amount of historic medical records to develop personalized conditions and factors that relate to highest likelihood of developing dementia



Targeted prevention measures and interventions are designed against specific factors to be delivered through COMFORTage solutions



The patients will be monitored using various appropriate devices, such as wearables, smart devices in their different environments connected with IoT and integrated with AI

# KEY PILLARS

1

## DIGITAL HEALTH EUROPE

Integrating and positioning the project into the Digital Health Europe (DHE) and engaging it with European Healthcare Communities

2

## EUROPEAN HEALTH DATA SPACE

Fostering innovation on integrated health records through the adoption of Holistic Health Records (HHRs) and integrate the project's Ageing-EHDS with the European Health Data Space (EHDS)

3

## INTEGRATED PLATFORM

Development of a Virtualized AI-Based Healthcare Platform (VHP) to centralize AI resources for risk factor analysis, early diagnosis, and personalized decision-making

4

## EMPOWERED AND IMPROVED HEALTH & DIGITAL LITERACY

Establishment of a hybrid user-centric training and educational toolkit to raise the awareness and engagement of the patients with their HCPs and care providers

5

## SOCIOECONOMICAL IMPACT ASSESSMENT

Showcasing socioeconomical benefits of the digitally enabled community-based care plans

6

## GENERAL PUBLIC

Enhancing trust of the general public, healthcare organizations and SMEs