



InteropEHRate

EHR in people's hands across Europe



GOVERNANCE MODEL

Final Conference, 28 September 2022

This project has received funding from the European Union's Horizon 2020 research and innovation programme under grant agreement No 826106



Governance framework for citizen-centric health data sharing: InteropEHRate scenarios

Exchange of EHR data mediated by the citizen



Access to patient's health data in an emergency

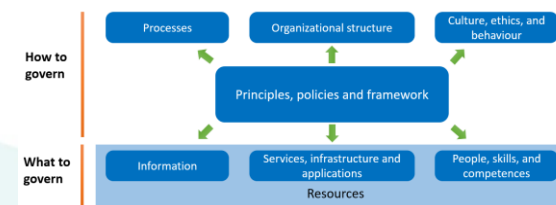
Access to EHR data from primary HCP



Data sharing for research

Citizen-centric health data sharing

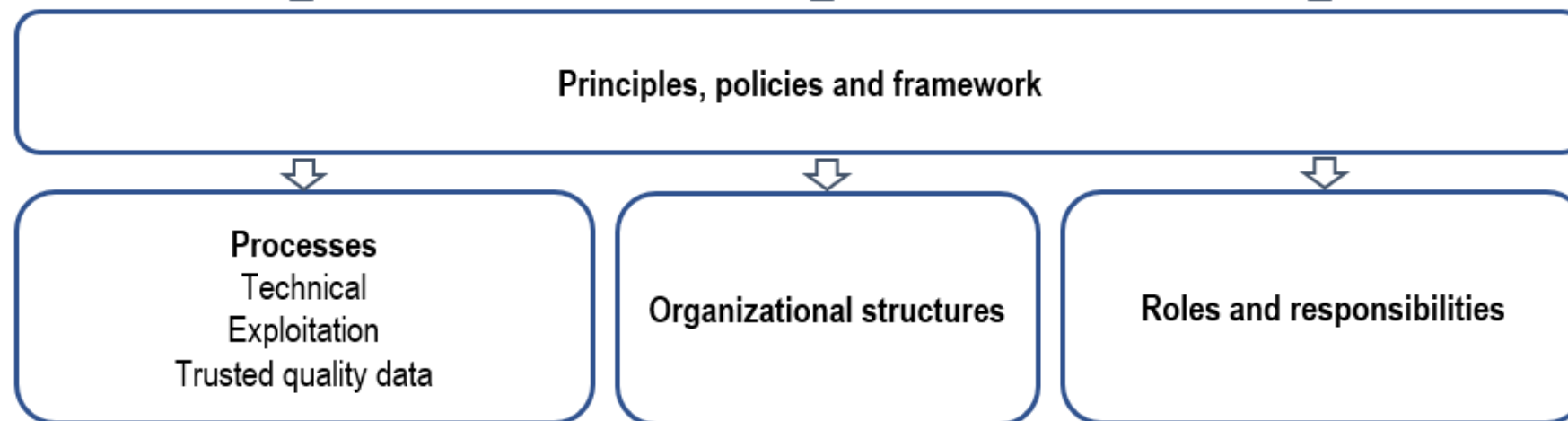
Governance framework for citizen-centric health data sharing



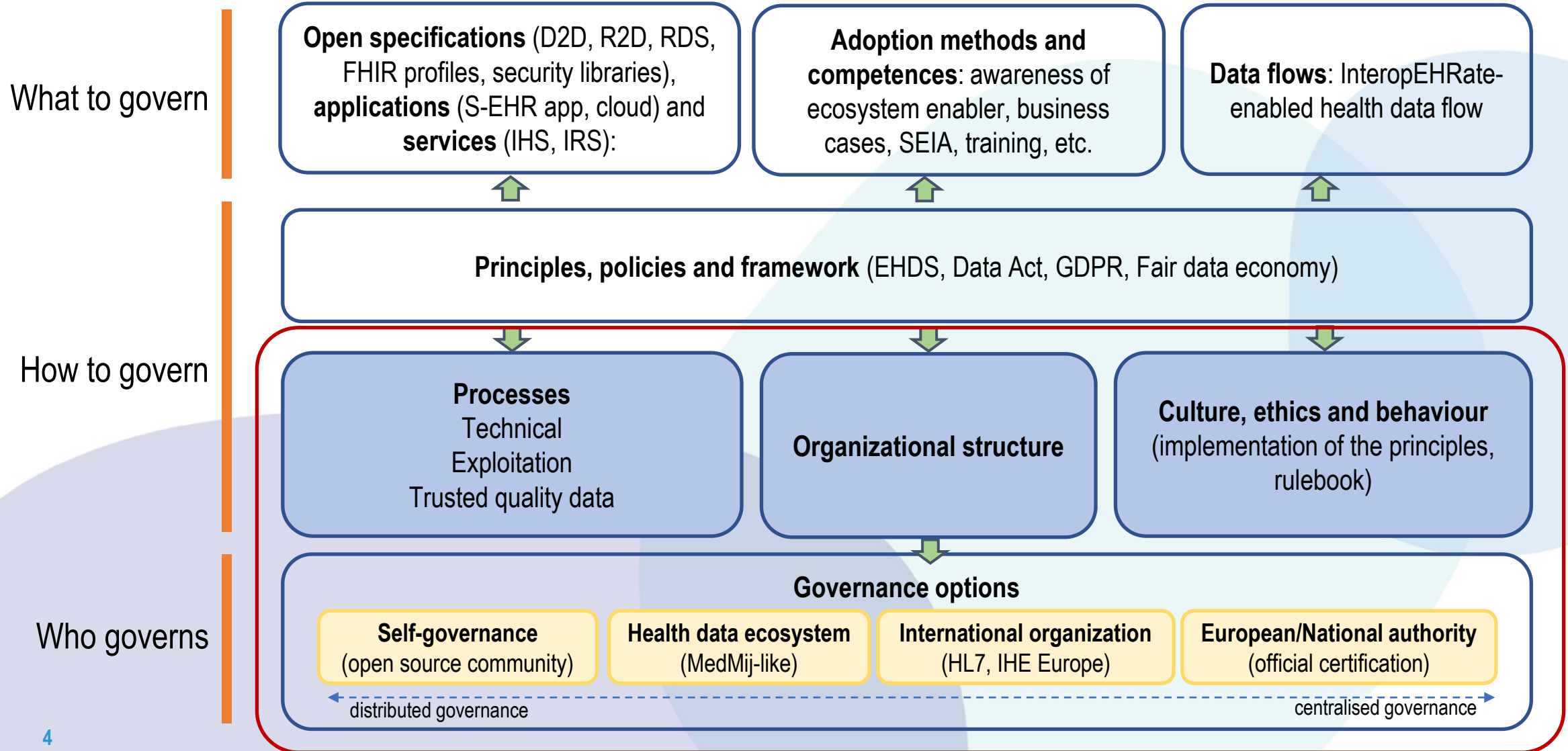
What to govern



How to govern



Adapted governance framework



How to govern? Processes

1 Maintenance and evolution processes

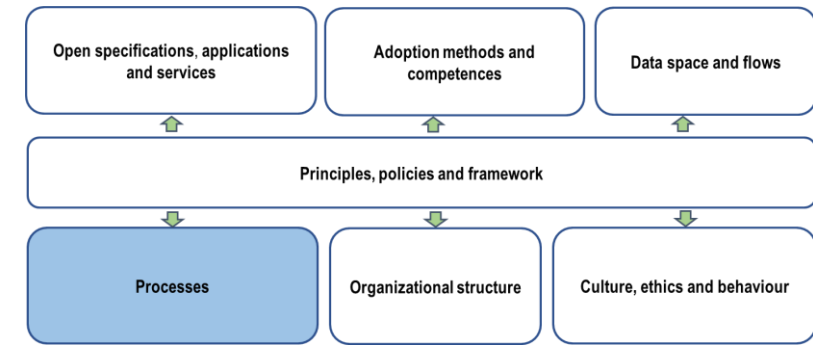
- Maintenance of exploitable assets and implementation guides
- Conformance and quality control
- Identification of shortcomings and coordination of change requests
- Evolution, test and validation of novelties
- Create a testing platform
- Version management

3 Data space and flows

- Trust-building among data holders and subjects
- Trusted quality of data
- Development of the ecosystem rules

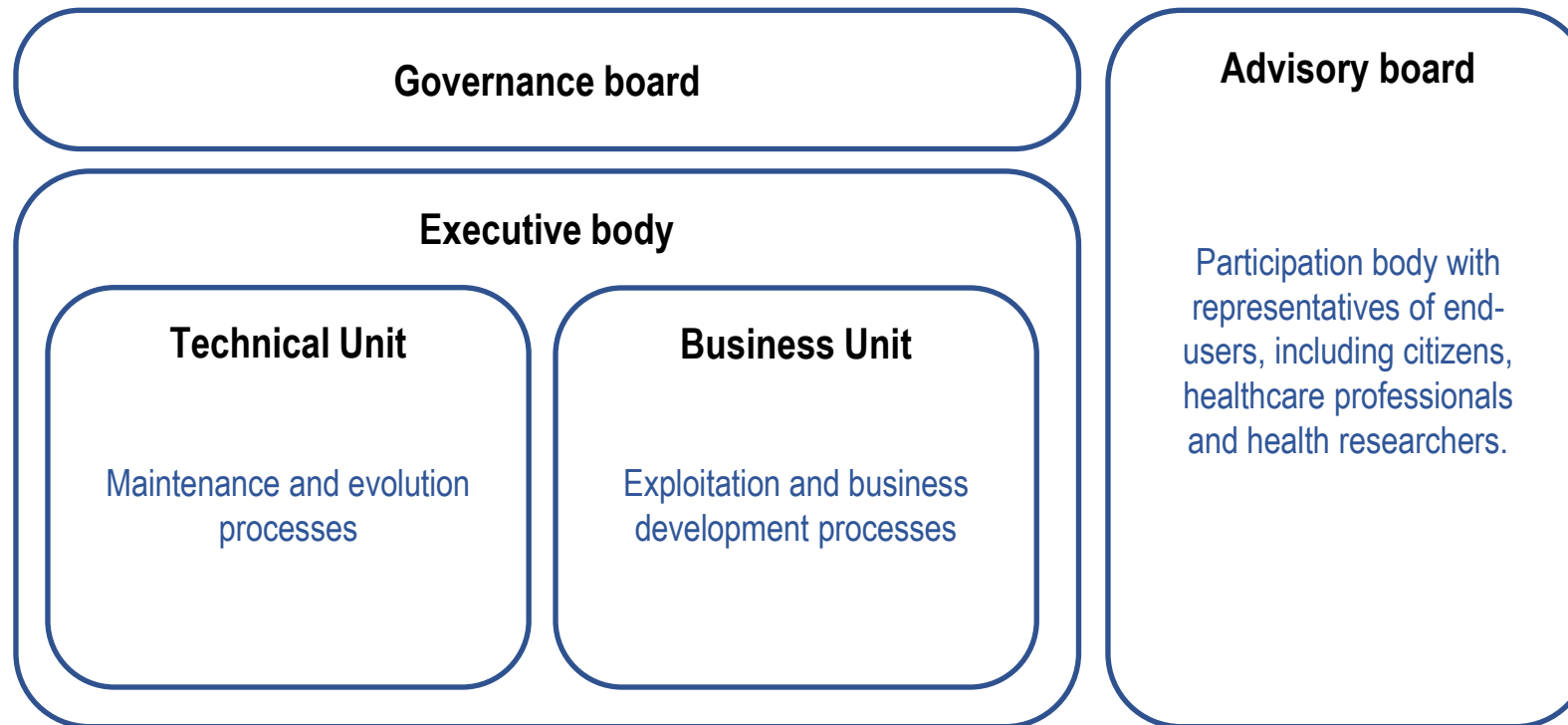
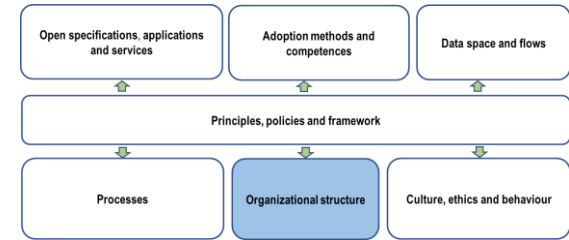
2 Exploitation and business development processes

- Identifying change management processes for standards and specifications, engaging the user and stakeholder community.
- Certification, audit processes.
- GDPR compliance considerations
- Sustainability, business model and financial resources



How to govern?

Organizational structure



Governance options

Attributes	Self-governance	Health data ecosystem	International organization	European / National Authority
Keyword	Open source community	Integration in a health data ecosystem	Development of standards	European / National certification / label
Approach	Bottom-up	Middle-out	Middle-out	Top-down
Public-private partnership	Mainly private	Mixt	Mainly private	Public
Industry participation	Open	Limited	Open	Limited



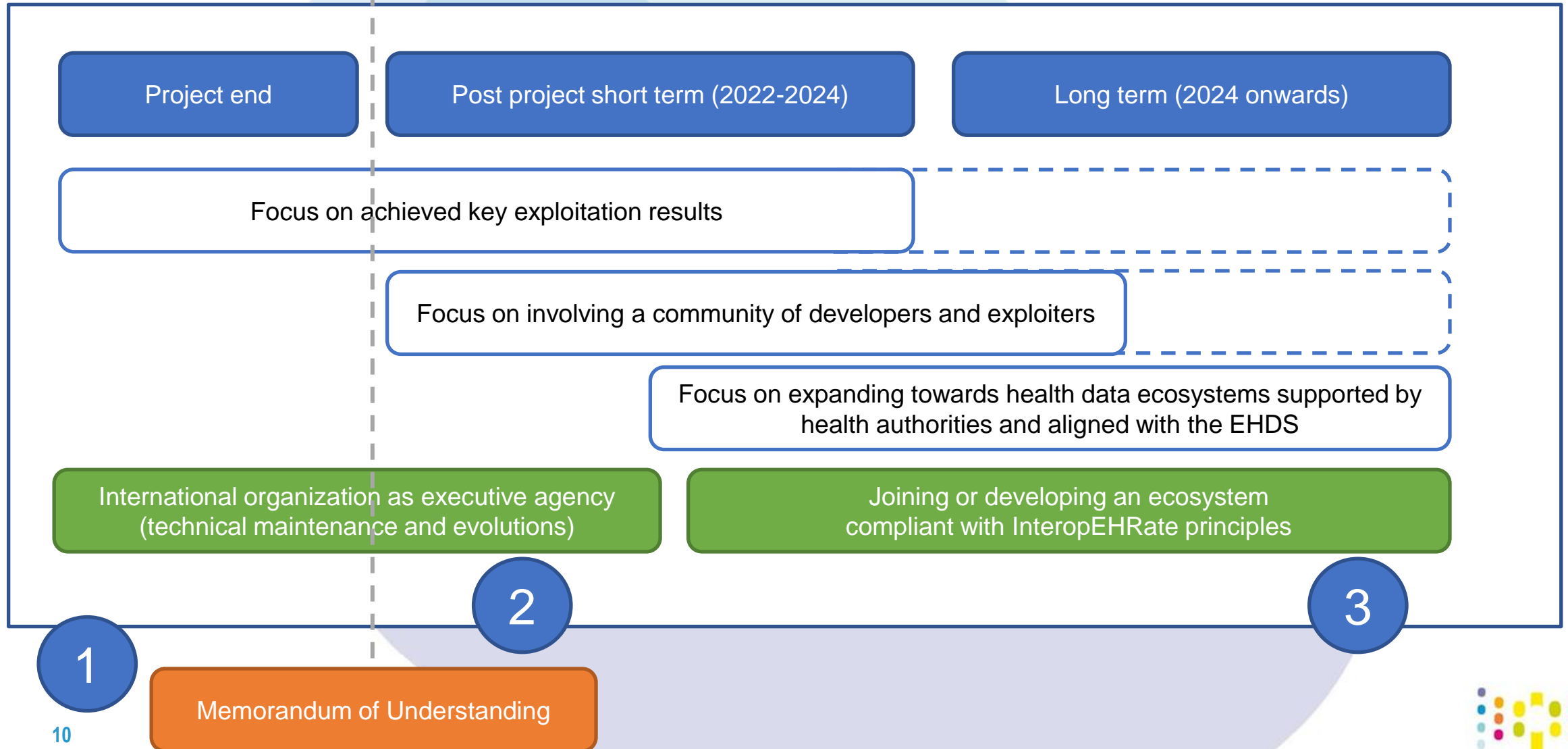
Governance options

- A **self-governed** community-based organization is in line with the open-source nature of InteropEHRate assets, attractive to create a developers' community and open to the collaboration of multiple organizations.
- An existing **international organization**, like an SDO, is an optimal candidate to host and manage the technical components of InteropEHRate. It would require to review how the exploitation and data flow assets are governed and managed.
- Direction and support from **European / National health authorities** would bolster InteropEHRate in a phase where it has already shown value at scale in reference sites.
- An **ecosystem** model of applications or health data exchanges is not foreseen as immediate governance model.



Proposed governance model of InteropEHRate

Proposed governance model: evolving configuration



Thank you!



www.interopehrate.eu

This project has received funding from the European Union's Horizon 2020 research and innovation programme under grant agreement No 826106

